

Company presentation

Facts Solutions References

Customer Seminar 14/08/27
at NARFOAMKAR Tehran



Basic Company Data

Group: euromicron AG (PLC)
CDAX Stock Exchange Germany

Establishment: 1996

Company type: Limited Company (Ltd.)

General Manager: Marc Lützenkirchen

Headquarter: Alfredstraße 157
45131 Essen
Germany



Presence Worldwide

Subsidiaries
and Partner
Companies

ProCom Beijing, People 's Republic
of China

Communications Ltd., Saint
Petersburg, Russia

Narfoamkar, Tehran, Iran

Frequentis AG, Austria

Sales
Partners
and System
Integrators

Netherlands

South Africa

Brazil

Indonesia

United Arabic Emirates



Activities and Competences – MADE IN GERMANY

Develop-
ment

Production

Sales

Service

Intercom- / PAGA-systems

DVS-21 for harshly environments (noisy, dirty, dusty, hot, cold, high mechanical strain)

Central Equipment for PAGA- Systems

Highly available server / client architecture
BSA and Softswitch to connect DVS-21 as
well as systems from other suppliers

(Tunnel) Emergency Communication Systems SOS

Call stations for party-line communication, SOS-
center DVS-21, PAGA-systems for tunnels

Target Markets



Transport Companies
(Railway Companies, Road Operators, Ports etc.)



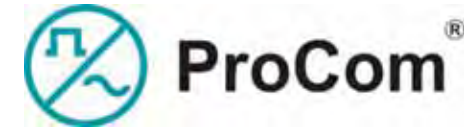
Utility Companies
(Power, Gas, Water)



Industrial Companies
(Metal, Chemical, Petro-Chemical, Food)



Introduction Procom



Turnover (euromicron AG)

2010: 204,000,000 Euro

2011: 305,000,000 Euro

2012: 330,000,000 Euro

Turnover ProCom (german market, incl. RSR)

2011: 7,000,000 Euro

2012: 6,375,000 Euro

2013: 6,900,000 Euro

Turnover ProCom (international markets)

2011: 725,000 Euro

2012: 1,700,000 Euro

2013: 3,300,000 Euro



Introduction Procom



Employees (euromicron AG)

2010: 1081

2011: 1455

2012: 1699

Employees ProCom (year 2013)

Management / Accounting / IT-Administration: 6

Research & Development: 10

Engineering / Construction: 11

Assembling / Testing / Commissioning: 18

Sales / Purchasing: 7

Construction supervision: 4



Railway solutions

Railway solutions

Local public address systems for different kinds of railway stations (small up to large stations)

Remote controlled public address systems for different kind of track and station types

Acoustical passenger warning systems (e.g for highspeed lines)

Announcement centers for manual, half automatic and fully automatic PA

Intercom and PA for marshalling yard

SOS systems for railway tunnels



Announcements Solution with DVS-21

Public
Address
Interfaces

IP-networks (VoIP)

Euro-ISDN (S0-Access)

DVS-21-networks

3rd party equipment (analogue)



Public
Address
Sources

ProCom Workstation BSA

Indoor and Outdoor Call Stations

3rd party Call Stations

Automatic announcement
systems



Announcements Solution with DVS-21

Features

Complete loudspeaker line monitoring

Automatic volume control (daytime and night-time)

Subscriber identification and priority control

Internal voice memory (process- or manual controlled)

ambient noise control

Various system sizes from 100 watts to many kilowatts of power amplifier

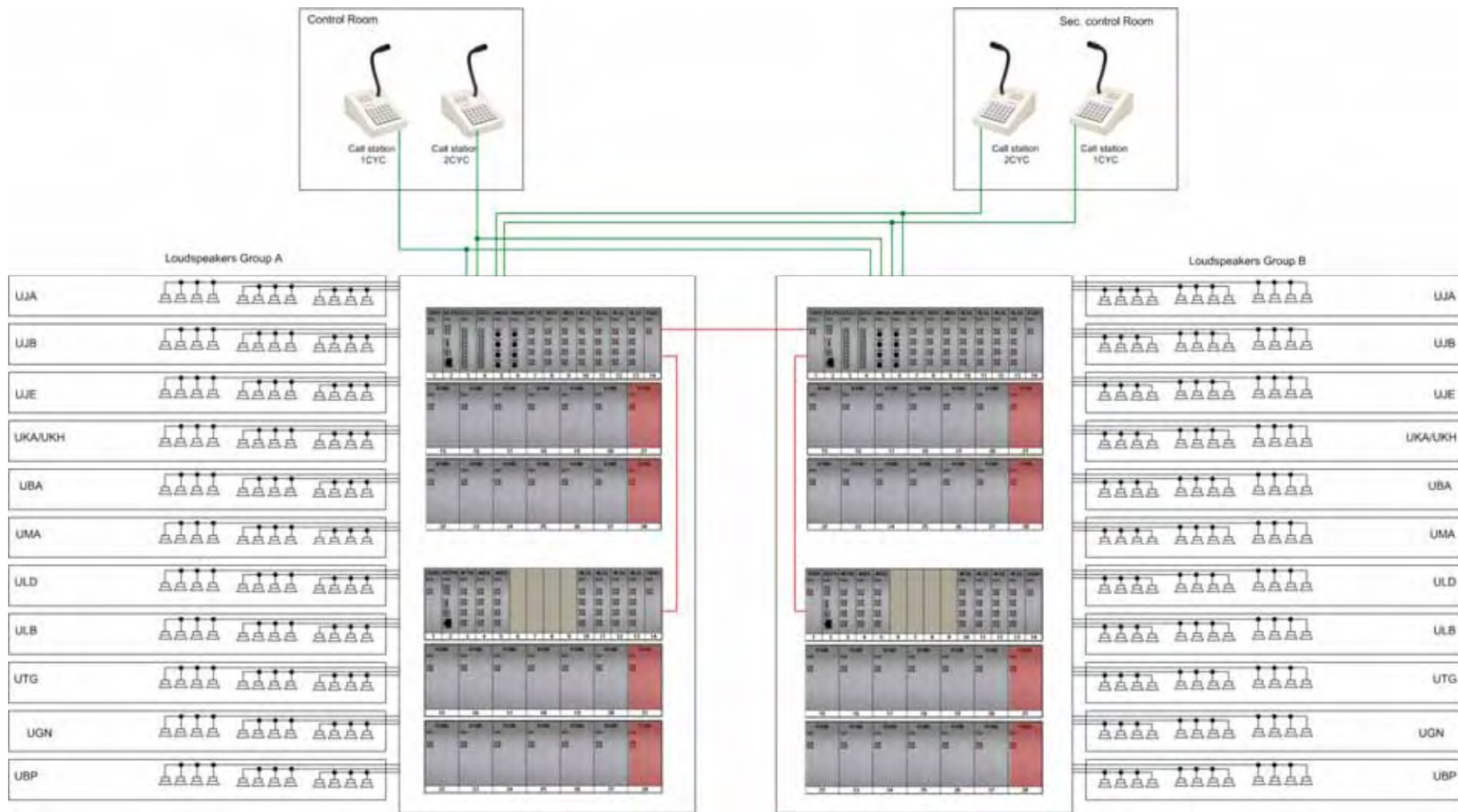
State of the art digital amplifiers from 100 Watts to 500 Watts Fanless
Maintenance Free



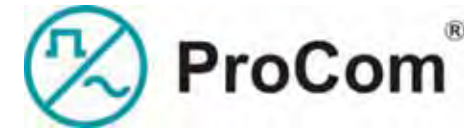
Local PA systems



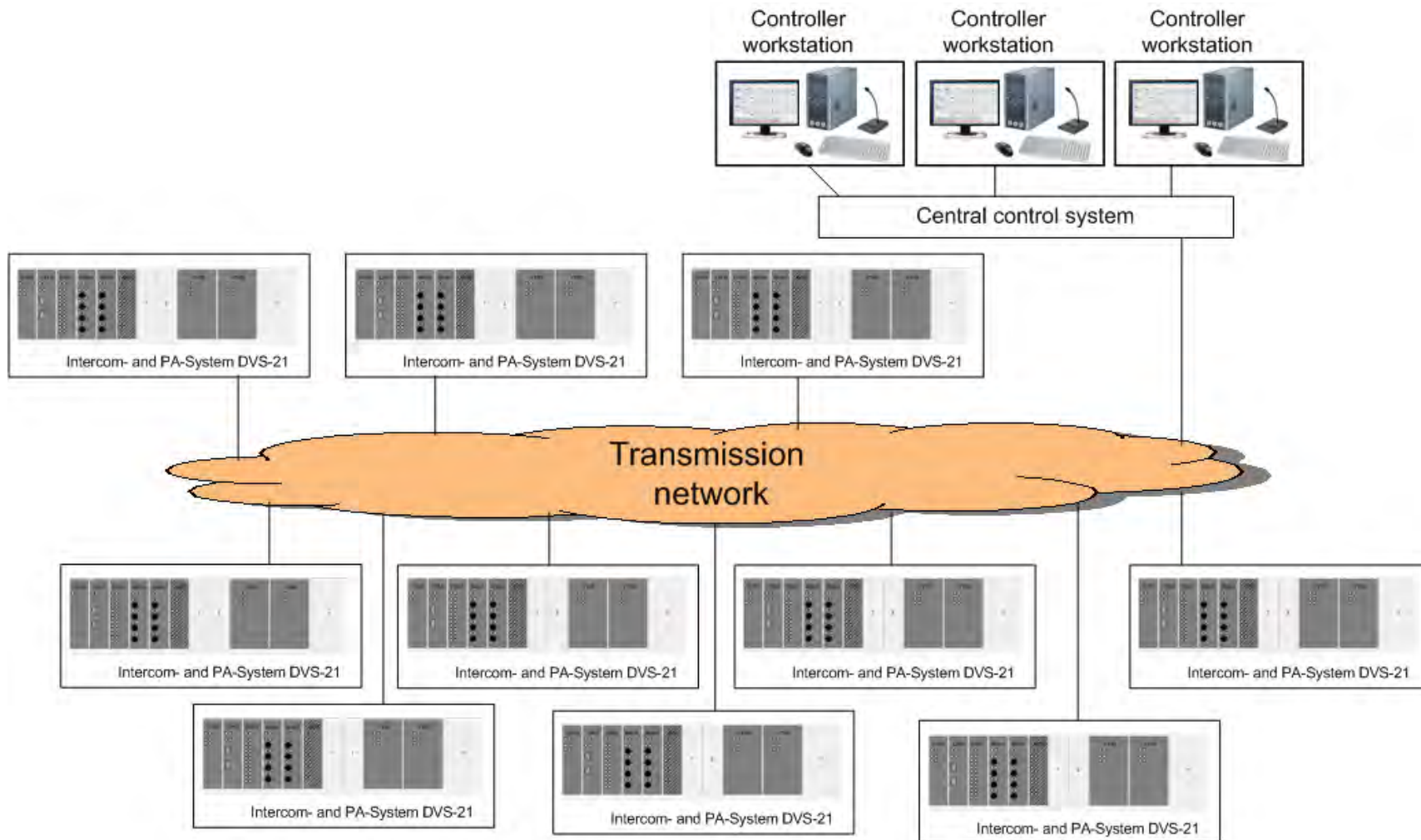
Scalable up to local systems for big stations (fully redundant)



Remote controlled PA systems



Scalable up to large track or area PA systems



Why Passenger warning systems?



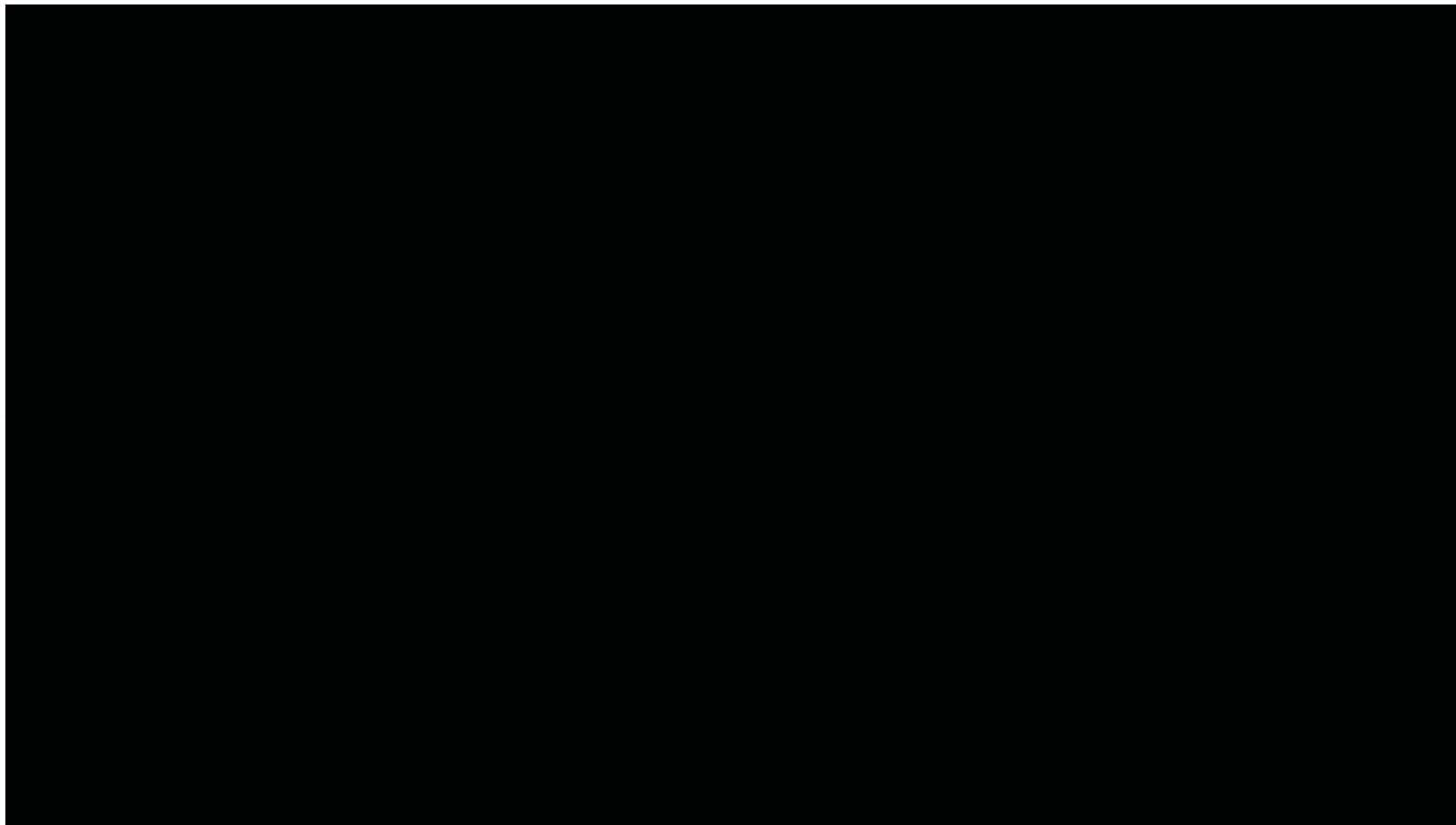
What can happen during a cargo or highspeed train passing?



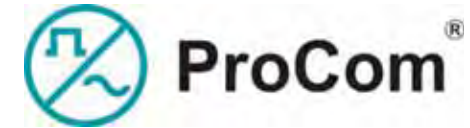
Passenger warning systems



Procom Solution



Passenger warning systems



System needs (according to german railway regulations)

Redundant loudspeaker cabling

Loudspeaker circuit monitoring to detect a single loudspeaker failure

system and amplifier monitoring to detect system failures

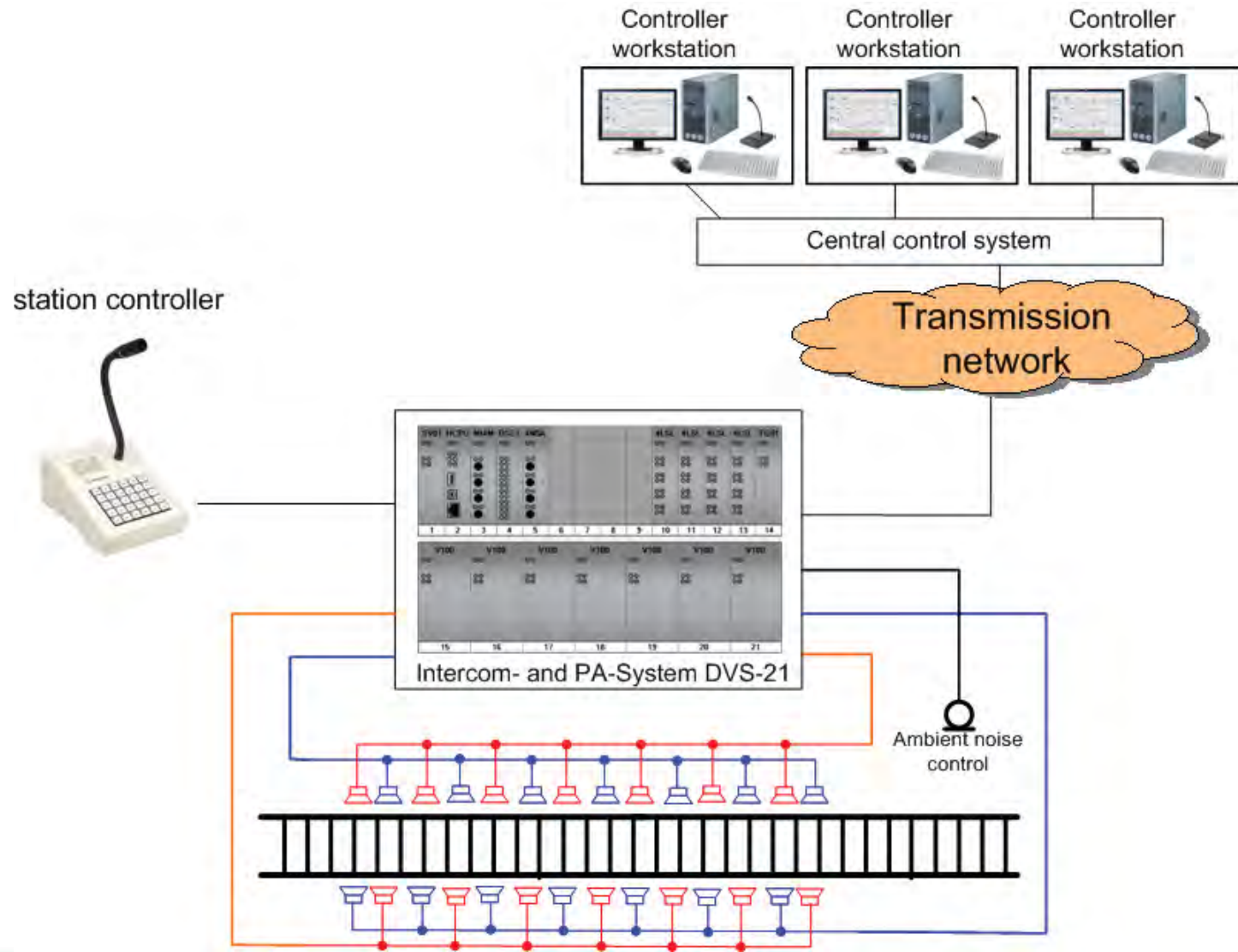
Ambient noise control

Different audio levels during day- and night time

Access and Priority control

Optical signalling of the announcement status (successful, busy or failure)

Passenger warning systems



Functionalities

Loudspeaker line monitoring (short cut, open circuit, impedance deviation)

Redundant cabling for loudspeaker lines

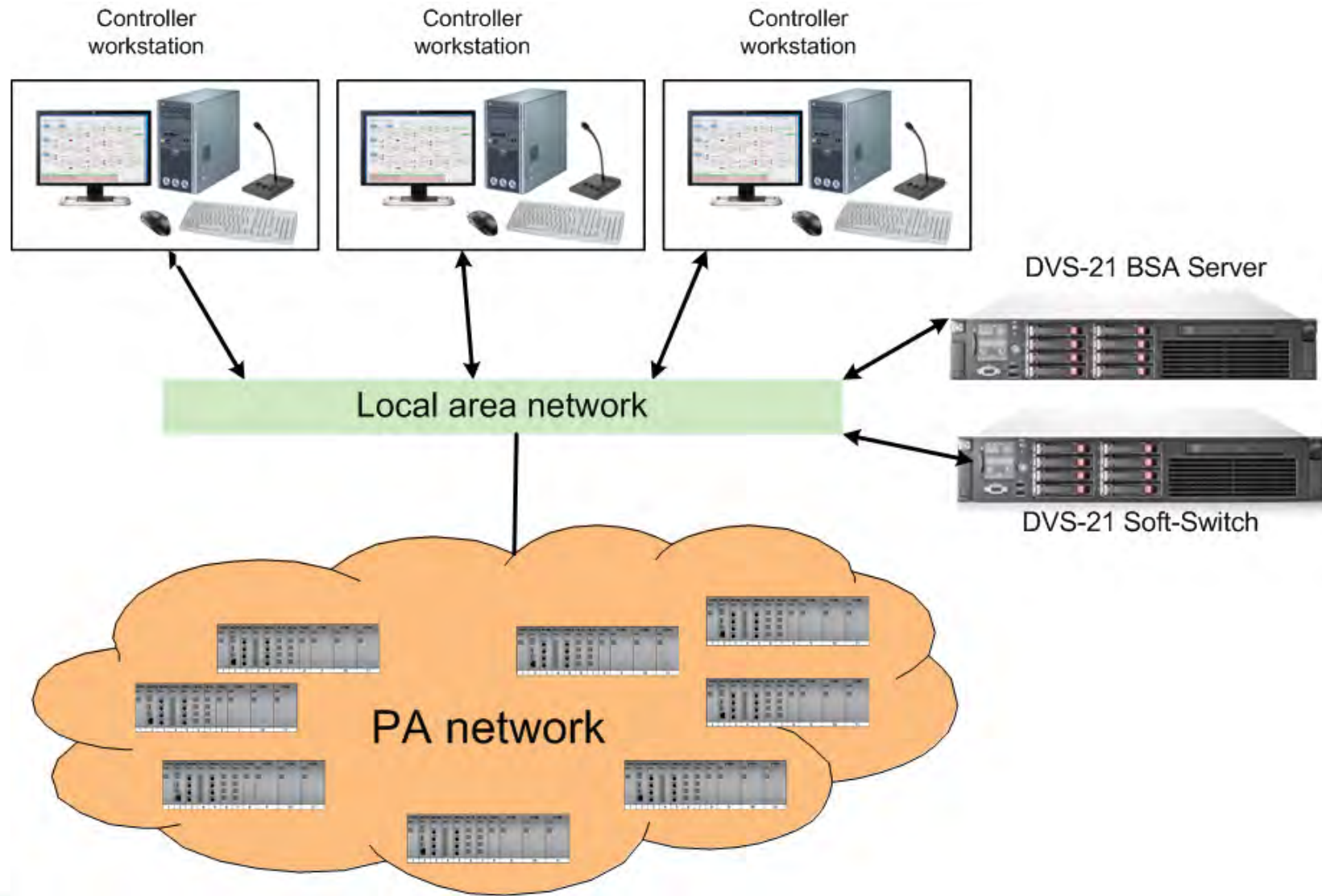
Complete monitoring of the transmission line from the operator workstation down to the loudspeaker

Manual, half automatic or fully automatic passenger warning messages before a train pass a platform



More safety on highspeed lines or large passenger stations

Announcement center



Announcements centers



Streckenübersicht 1 Ansbereich Hannover Hbf 2 Ansbereich Mitte 3 Ansbereich Nord 4 Ansbereich West 5 Ansbereich Süd 6 Ansbereich Ost 7 Ansbereich RWA-Stationen Meldungen

ProCom

Vor-Gang:
 niemals einmal immer
 Klassisch ag

Feste Ansagen
 Evaluierung Zugdurchfahrt
 Zügeinfahrt LK-Test
 RL500

Variable Ansagen
 V01 V02
 V03 V04
 V05 V06

ProCom
 FJA Ansagen
 Zyklische Ansagen
 Historie
 Auswahl löschen

Mikrofon

Start Datum	Start Zeit	Beschreibung
2013-02-28	09:06:01.820	Bereich Süd - Kirchdorf gestört
2013-02-28	09:06:01.792	Bereich Mitte - Bereich Mitte H-Hbf. III gestört

Benutzeranmeldung
 09:07:09 Dv 280213

Announcements centers

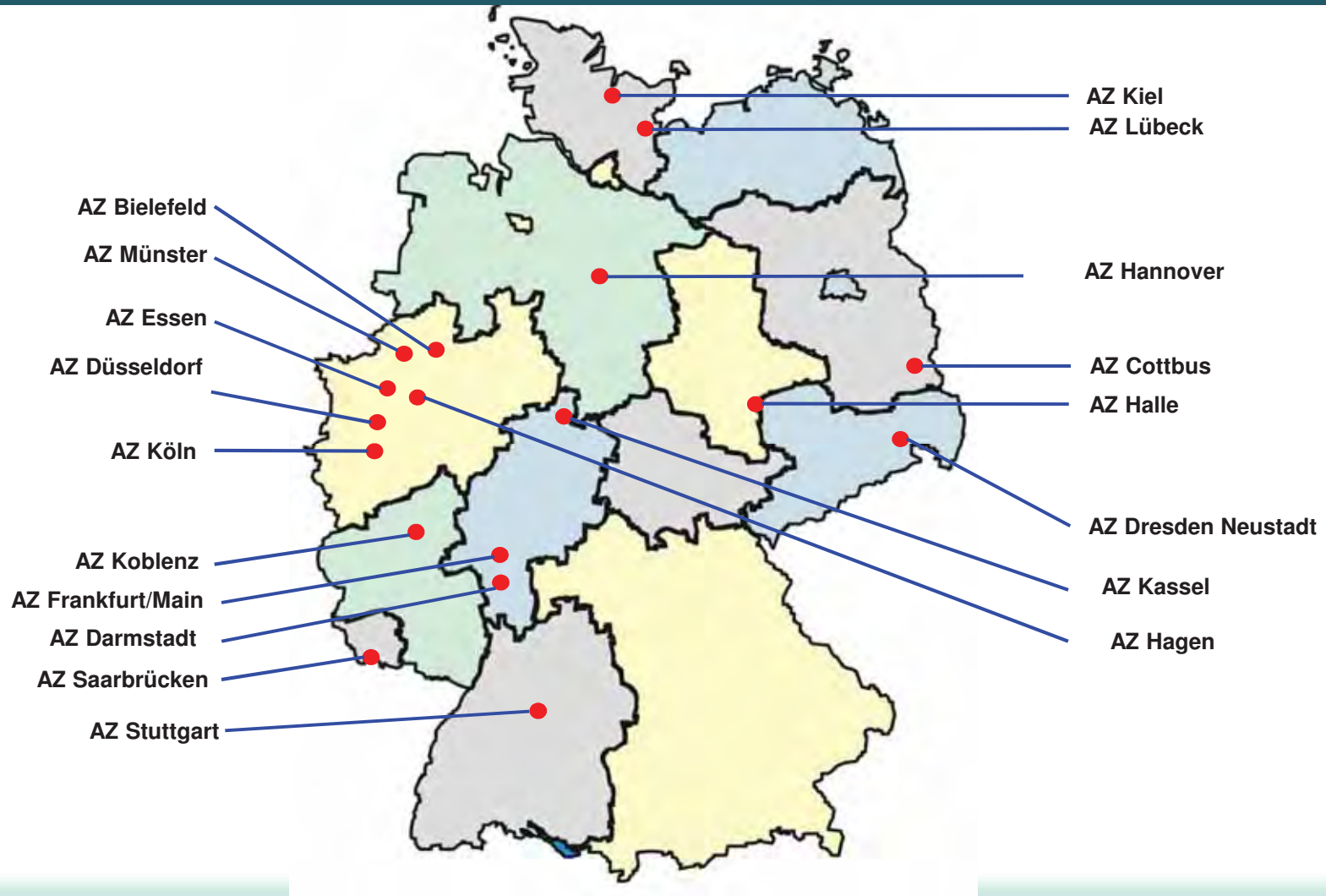


The screenshot displays the ProCom software interface. At the top, there are navigation tabs for different areas: 1. Ansaagebereich Hannover Hbf, 2. Ansaagebereich Mitte, 3. Ansaagebereich Nord, 4. Ansaagebereich West, 5. Ansaagebereich Süd, 6. Ansaagebereich Ost, 7. Ansaagebereich RWA-Stationen, and a 'Meldungen' (Messages) tab. The main area shows a tree view of system components with their status. The 'Bereich Mitte' (Middle Area) is highlighted in red, indicating a fault. Below the tree, there are buttons for 'Speichern' (Save) and 'Zurücksetzen' (Reset). At the bottom, a table shows recent messages.

Start Datum	Start Zeit	Beschreibung
2013-02-28	09:06:01.820	Bereich Süd - Kirchdorf gestört
2013-02-28	09:06:01.790	Bereich Mitte - Bereich Mitte H-Hbf. III gestört

Announcements centers

Projects at German Railways



Tunnel Emergency at a Glance

SOS partyline system for up to 12 km per line

Up to 26 special SOS-call stations in one line

Through central power supply very low-maintenance system (No local Batterie needed)

Calls from the tunnel control center to the tunnel call stations (e.g. for maintenance communication)

Sequential group call for searching people in the tunnel (e.g. maintenance staff)

Extendable as a tunnel announcement system

VoIP interface to the tunnel control system



ProCom DVS-21, Interface description

NSA-PL Line card for SOS Line interconnection in 6 wire technique



- **Robust transmission in 6-wire technology
Audio / Data / Power**
- **Switching-on of up to 48 call stations per Line Interface**
- **Call station malfunction / identification from the control unit**
- **Monitoring of call station voltage**
- **Establishing long-distance lines of up to 13 km
(Cable 4 x 2 x 1.2 mm)**
- **Sending/receiving level can be regulated**
- **48V / 72V increased Power Supply**

ProCom DVS-21, Interface description

SV01-PL Voltage supply module for NSA-PL



- DC/DC voltage supply for NSA-PL interface module
- Display and forwarding of group malfunction signals
- Output voltage either 48V DC or 60V DC or 72V DC (configurable)
- Monitoring of the output current (continuous short-circuit protection)

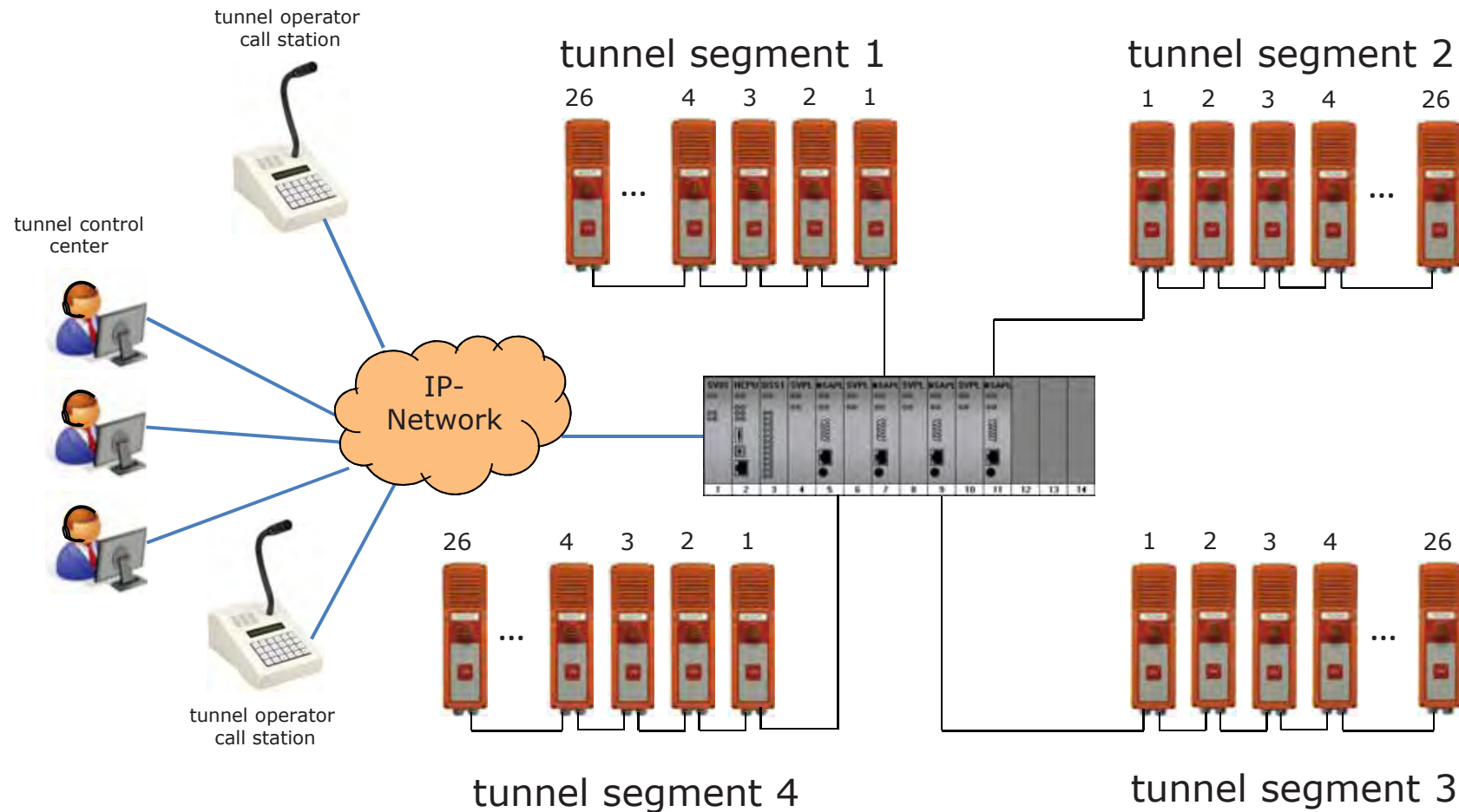
ProCom DVS-21, call stations

WPS-PL (SOS Line) Weatherproof Call Station, SOS



- 6-wire technology: Audio / Data / Power
- SOS Push Button / with backlight (LED)
- Two Versions available:
 - One SOS Button
 - One SOS Button and two Control Buttons
- Built-in microphone / 4 Watt Pressure Chamber Loudspeaker (SPL> 100dB)
- Weatherproof design (protection rating IP65)
- Large temperature range
 - Storage -30° C to +70° C,
 - Operating -20° C to +55° C
- Up to 13 km Distance and 26 Users (Cable 4 x 2 x 1.2 mm) per Line Interface NSA-PL and SV01-PL
- Good/Malfunction identification
- Hands-Free Operation

Tunnel Emergency – typical installation



Industry solutions

industry

Combined public address and intercom systems for all kinds of industrial communication needs

Special protected call stations for potentially explosive areas

Interfaces to the existing communication systems like private mobile radio systems, PBX-systems, etc.

Monitored interfaces to existing alarm systems like fire- or gas alarm systems

Outdoor call stations and loudspeakers for harsh environments (hot, dusty, noisy areas)

System redundancy solutions for areas with high safety requirements



DVS-21 at a Glance

Completely modular communication and PA-System, that can be adapted to the customer needs and to the requested system size very easily

Complete monitoring of all system components and the loudspeaker lines is possible

Interfaces for a lot of different functions (call stations, communication lines, 3rd party equipment, VoIP, etc.)

Different subscriber terminals for indoor, outdoor and potentially explosive areas

Easy to program with special configuration tools

Customer specific adaptations possible



Products



Digital communication System ProCom DVS-21



Sample configuration DVS-21



WPS-PL

WPS-08

WPS-04
AWC-06

DTA-LAN

DTA-012

DTA-030

DTA-048

ProCom DVS-21 Features

- Modular and Flexible
- IP Communication Platform
- Multiple Functionalities
- Multi Connectivity
- Management
- Service & Maintenance
 - Fanless
 - Availability > 99,9%
 - Maintenance Interval (*not applicable*)



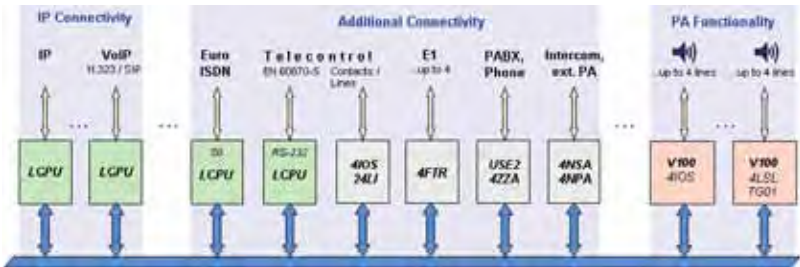
ProCom DVS-21 modular and flexible

- Adaptable for every task
 - PA output power: 100W – 2000W in increments of 100W
- Easy programmable
- Extendible to 3 racks (internal bus)
- Basis system designed for 28 modules
 - (up to 104 call stations / 2000 Watts)
- Cascadable up to large configurations
 - (up to 600 call stations / more than 20 kW)



ProCom DVS-21 multiple connectivity

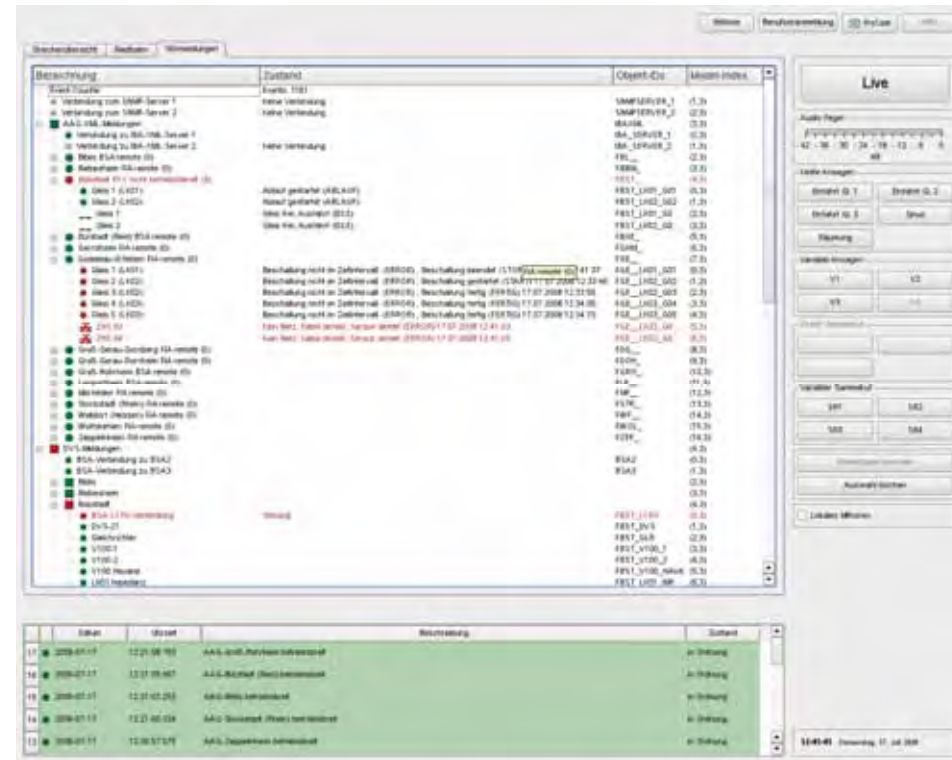
- IP
- SHDSL *
- E1 (G.703 / G.704)
- Serial (RS-232, EN 60870-5)
- Telephony Euro-ISDN S0 and Analogue (terminal)
- Analogue (-6 dBm 3,4 / 7kHz)
- Contacts / Lines (Telecontrol)



* via external Modems

ProCom DVS-21 flexible management

- **Reporting**
 - All boards
 - All inputs
 - All outputs
 - Loudspeakers
 - Loudspeaker groups
 - Signal paths
- **Controlling**
 - Remote System Configuration (RS-232 / IP)
 - 2 banks of System Firmware
 - 4 banks of system configuration



ProCom DVS-21, Interfaces



- SV01 - DC-Converter in different performance classes for a complete DVS-21 system
- CPU1 - Processor Module
- HCPU - new Processor Module with remote configuration and monitoring
- LCPU - linux CPU for different applications (VoIP, ISDN, DAS, ...)

ProCom DVS-21, Interfaces



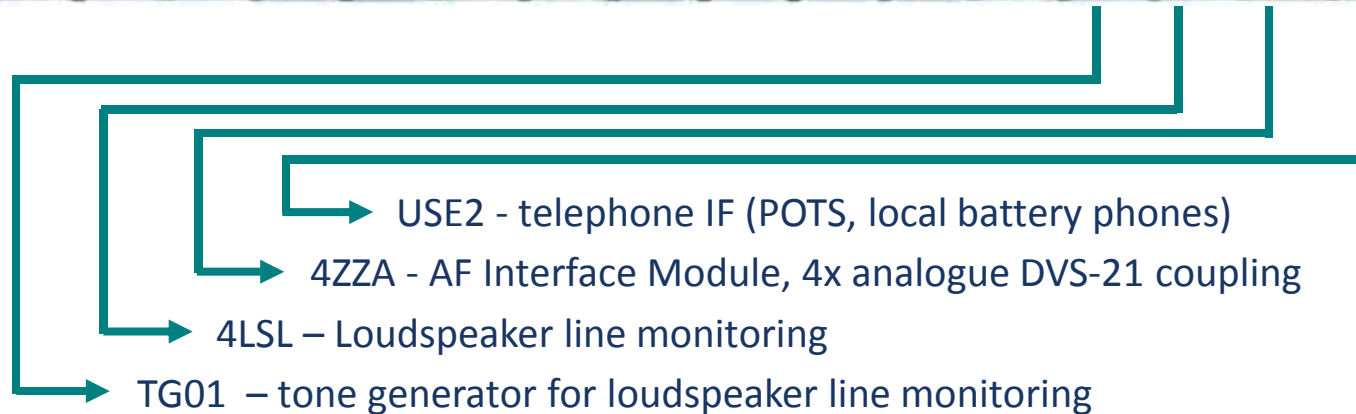
- 24LI – Line Interface Module with 24 Lines for analogue intercom
- 4NPA - AF Interface Module for 4 sets, analogue version
- 4DAV - AF Interface Module for 4 in 2-wire technique (for WPS-xx/2)
- 4NSA - AF Interface Module for 4 sets incl. fusing (for DTA xx and WPS-xx/4)

ProCom DVS-21, Interfaces



- DSS1 - Digital Storage Module Alarm tones, messages, call evaluation
- MI4M - Level control depending on ambient noise
- 4IOS - In/Output Interface Module, 8 opto coupler inputs / 4 relay outputs
- 4FTR - base interface for up to 4 E1 / ISDN-S0

ProCom DVS-21, Interfaces



ProCom DVS-21, call stations

Outdoor – weatherproof call stations



- available with 4 or 8 toggles (4-way) with LED and as a dial version
- available as 6-wire version (with 4NSA) and 2-wire version (with 4DAV)
- Add-on Toggle Section with 6 Toggles
- built-in 25 Watt booster amplifier (optional in 2-wire version)
- Weatherproof design (IP65)
- Large temperature range (-30 °C to +70 °C)
- Resistant to many chemicals
- Flame resistant
- Easy installation

ProCom DVS-21, call stations

explosion-proof call station WPS-04 Exx and WPS-04Ex



- economical 2-wire digital technology
- Up to 4 km remote installation with internal 4 Watt loudspeaker
- Compact and robust design for wall mounting
- Intercom electronics with microphone preamplifier and dynamic compressor
- Material made of glass-reinforced polyester, fully insulated, colour red (RAL 3001)
- Operating voltage 48 VDC
- Protection class IP65

ProCom DVS-21, call stations

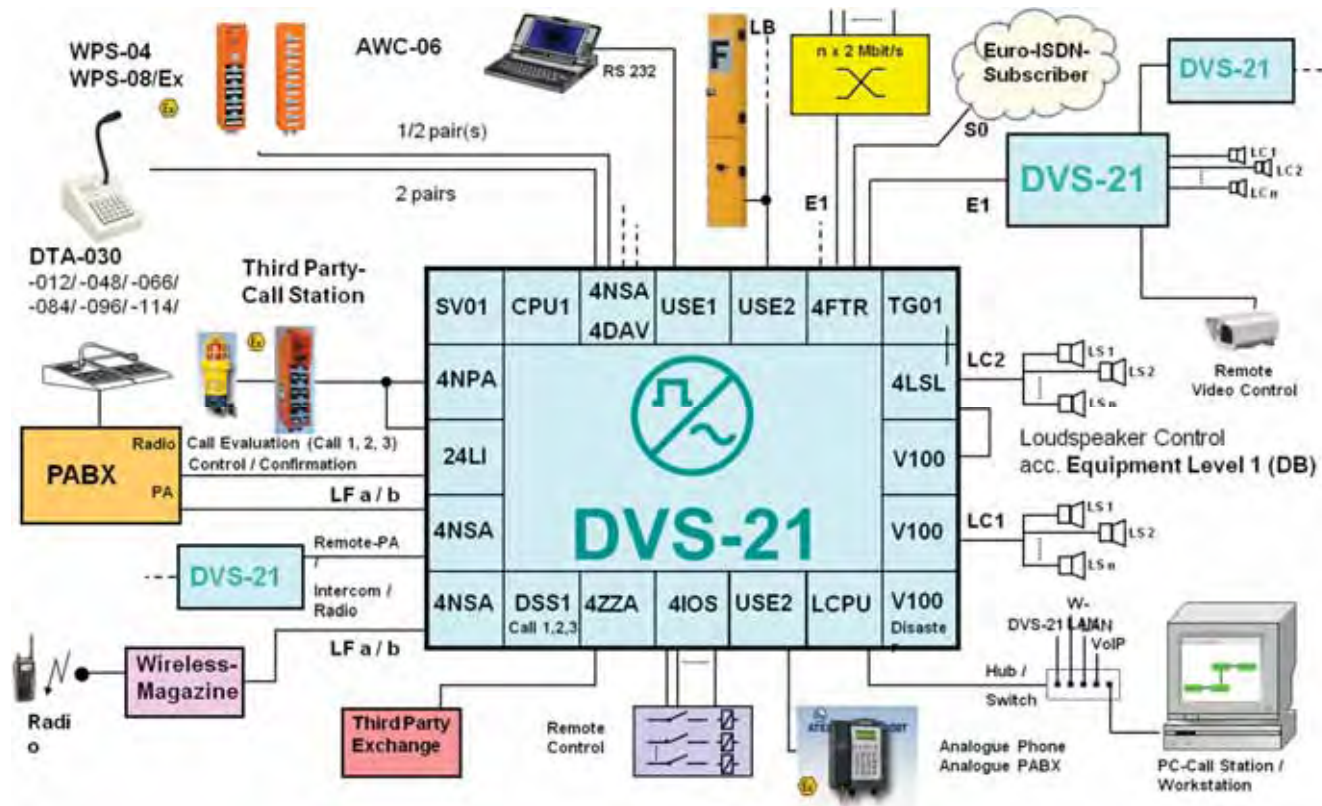
indoor – desktop call stations



- available with 12, 30 or 48 button with LED
- Connection using plug-in cable
- Freely programmable key functions (e.g. louder/softer and alarm function)
- Optionally with hand-held microphone
- Optionally with head, audio, voice set (headset)
- Optional special functions by request (e.g. fire brigade call station with monitored microphone)

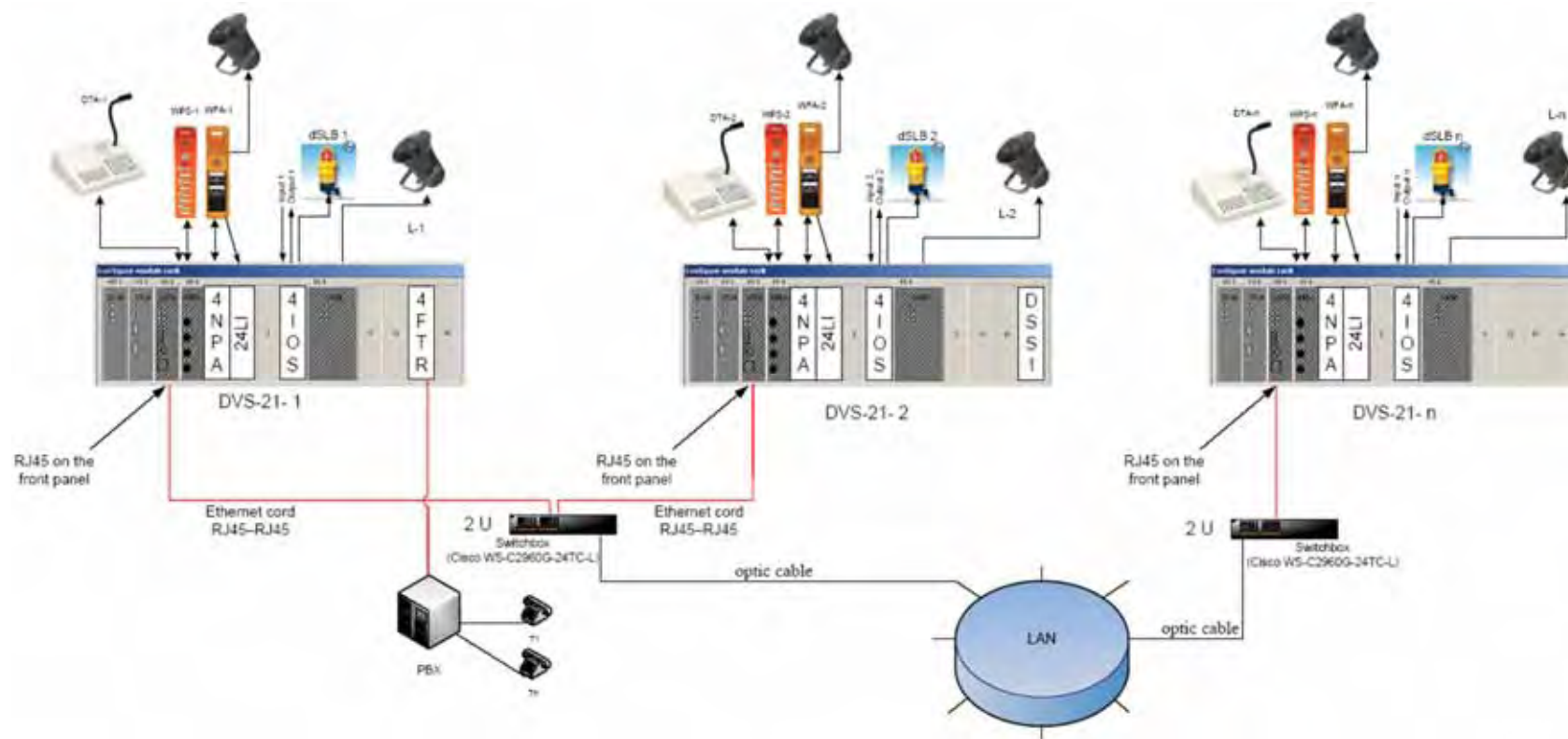
ProCom DVS-21, system examples

fully equiped system



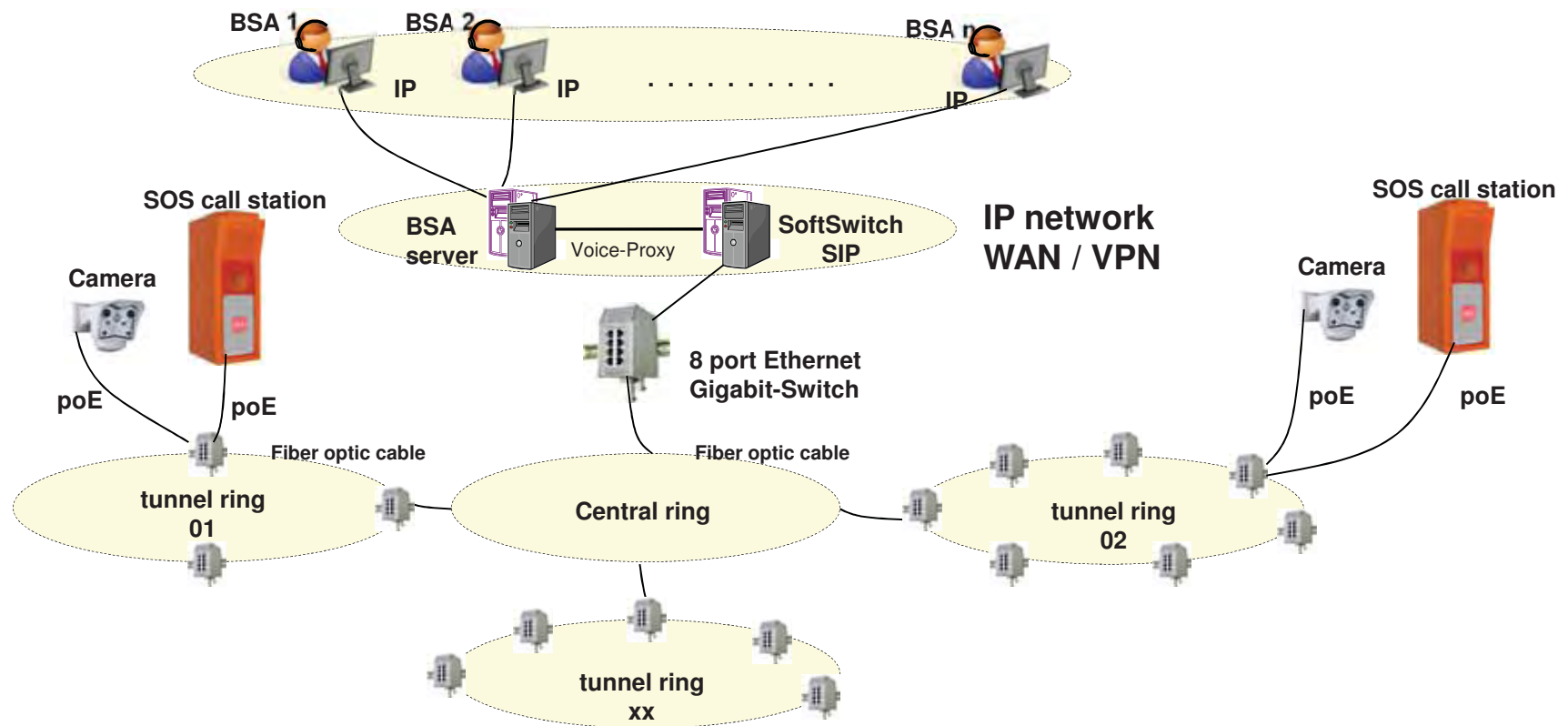
ProCom DVS-21, system examples

Excample for networked trackside equipment



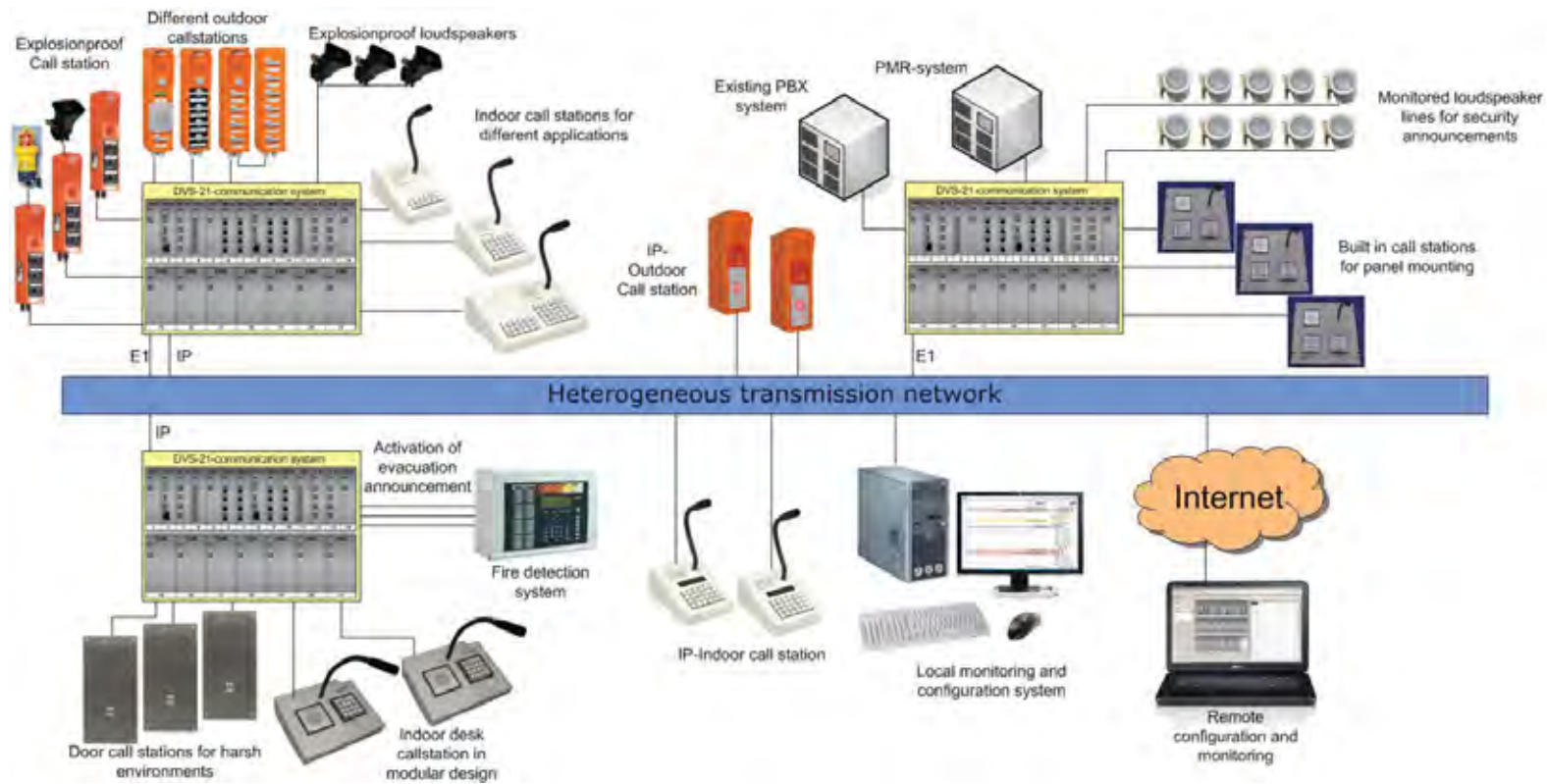
ProCom DVS-21, system examples

Example for tunnel communication system (Turkey)



ProCom DVS-21, system examples

Example for industrial application



Steel & Aluminium Plants

Steel Plants

China, Brazil, Germany, Africa, Turkey
(eg. Baosteel, Thyssen Krupp, Mital Accelor, V&M, CSN)

Stainless Steel Plants

Brazil, China, Germany, Africa, Turkey
(eg. TISCO, Nirosta (Thyssen Krupp))

Aluminium Plant

Germany, Brazil
(eg. Novelis, Alumar)



Petro Chemical & Chemical Plant

Petro Chemical Plants

China, Russia, Germany, Africa
(eg. Lukoil, Gasprom, elf/Total, CSPC /Shell, Petro China)

Chemical Plants

Brasil, China, Germany
(eg. BASF, Chempura)



Power Plants

Nuclear Power Plants

Brazil, Switzerland
(eg. Angra II Elektrobras, Beznau Axpo AG)



Coal Power Plants

China, Germany, Netherland, Russia
(eg. Fuxi, RWE, Eon)



Water Power Plants

Russia



References

Outdoor call stations in operation



Dillinger Hüttenwerke (metallurgical plant)

- **Realization period:** 2001 until now
- **Project description**
 - 8 DVS-21 intercom/PA-systems (networked)
 - app. 200 outdoor call stations (partially explosionproof)
 - app. 120 indoor call stations
 - networking over 2 Mbps-links
 - 35 PA zones

The system will be used for the operational communication between control rooms and different production areas- such as blast furnace, sinter plant, steel works and as acoustic warning system



Thyssen Krupp Nirosta (stainless steel works)

- **Realization period** : 2005 until now
- **Project description**
 - 7 DVS-21 intercom systems
 - app. 70 outdoor call stations
 - app. 35 indoor call stations
 - transmission system between the DVS-21
 - various PA-zones

The systems will be used for communication between control rooms and different production areas, such as strip casting plant, rolling mills, glowing and pickling lines and as acoustic warning system



TISCO-Taiyuan Iron & Steel (Group) Co., Ltd

- **Realization period** : 2010 till now
- **Project description**
 - 10 DVS-21 intercom/PA-systems (networked)
 - about 400 outdoor call stations (partially explosionproof)
 - about 100 indoor call stations
 - networking with PLC for process controlling
 - 60 PA-zones

The systems will be used for operational communication in the complete company area with the functions PA, intercom, PMR-links and acoustical alarming



Shanghai Baosteel

- **Realization period** : 2004 until now
- **Project description**
 - several DVS-21 intecom/PA-systems
 - app. 300 outdoor call stations (patially explosionproof)
 - app. 50 indoor call stations
 - networking over 2 Mbps-links
 - 25 PA-zones

The system will be used for the operational communication between control rooms and different productons areas- such as blast furnace, sinter plant, steel works and as acoustic warning system



South Kaveh Steel Company (Iran)

- **Realization period** : 2010/2011
- **Project description**
 - combined public address and intercom system
 - 18 indoor call stations DTA-066 and DTA-030WP (weatherproof version)
 - 20 weatherproof outdoor callstations WPS-04
 - 10 fully monitored loudspeaker lines for warning functions
 - Set of indoor and outdoor loudspeakers, junction boxes and special installation materials

The system will be used for the operational communication between control rooms and different production areas and as acoustic warning system



National Iranian Steel Co. Hormozgan Steel Complex

- **Realization period** : 2008 until 2010
- **Project description**
 - combined public address and intercom system
 - 3 indoor master control stations DTA-066
 - 21 weatherproof outdoor callstations WPS-08
 - 5 explosionproof outdoor call stations
 - 12 fully monitored loudspeaker lines for warning functions
 - Set of indoor and outdoor and explosionproof loudspeakers, junction boxes and special installation materials

The system will be used for the operational communication between control rooms and different production areas (partially potential explosive areas) and as acoustic warning system



Chemtura Acorn, Nantong Chemical industrial park

- **Realization period** : 2013 until now
- **Project description**
 - Combined intercom- , public adress and general alarm system for different production areas
 - 500 Watt amplifiers for PA and general alarm
 - 3 indoor call stations forthe main control rooms
 - 12 outdoor call stations (partially for hazardous areas)
 - Complete set of indoor, outdoor and explosion proof loudspeaker
 - Onsite project commisioning by our technicians in China



RWE Power (open-cast mining)

- **Realization period** : 2004 until now
- **Project description**
 - DVS-21 on dredger machines in the open cast mines Inden and Hambach
 - 2-3 DVS-21 systems at each dredger machine, networked via fiber optic cable
 - Marshaller radio systems
 - Construction side radio systems,
 - Trunking radio systems



Thank you for your attention!

Any questions?